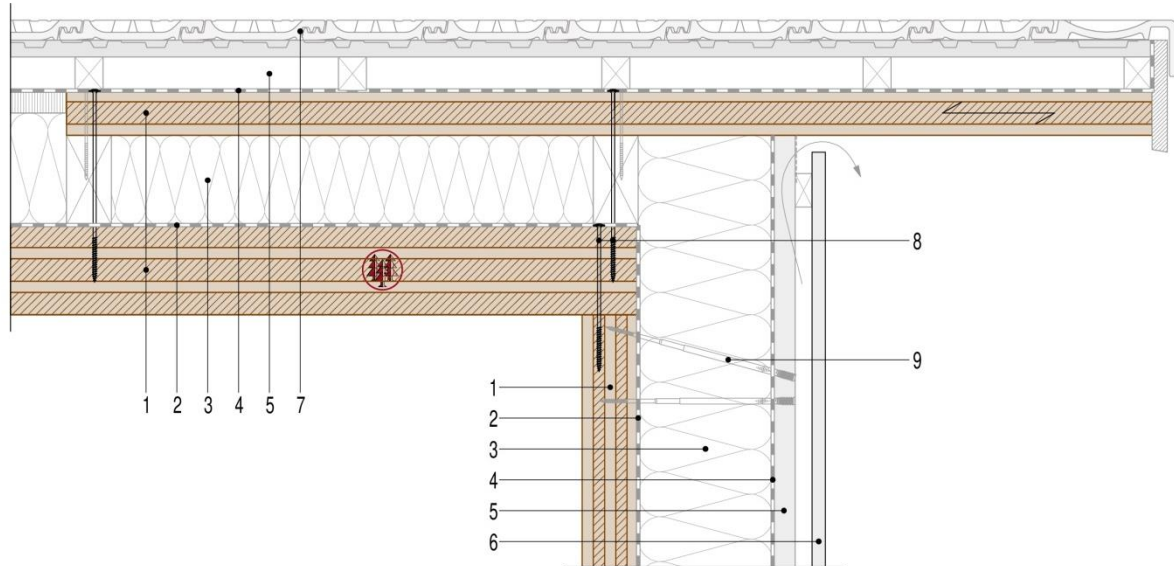


4.2 Detail of roof edge (verge)



- 1 CLT panel (according to statics)
- 2 Vapour barrier (if applicable, depending on building physics)
- 3 Insulation
- 4 Water barrier film
- 5 Air gap, battens
- 6 Exterior timber cladding (see profile on www.schilliger.ch)
- 7 Roofing
- 8 Assembly screws
- 9 Assembly (according to technical data sheets)

This detail can be applied to single-storey or multi-storey wooden buildings. It serves as an aid and does not replace a building concept. The detail must be adapted according to static, building physics and fire safety requirements. Variants with different products are possible. Our technical office is at your disposal for any questions you may have.