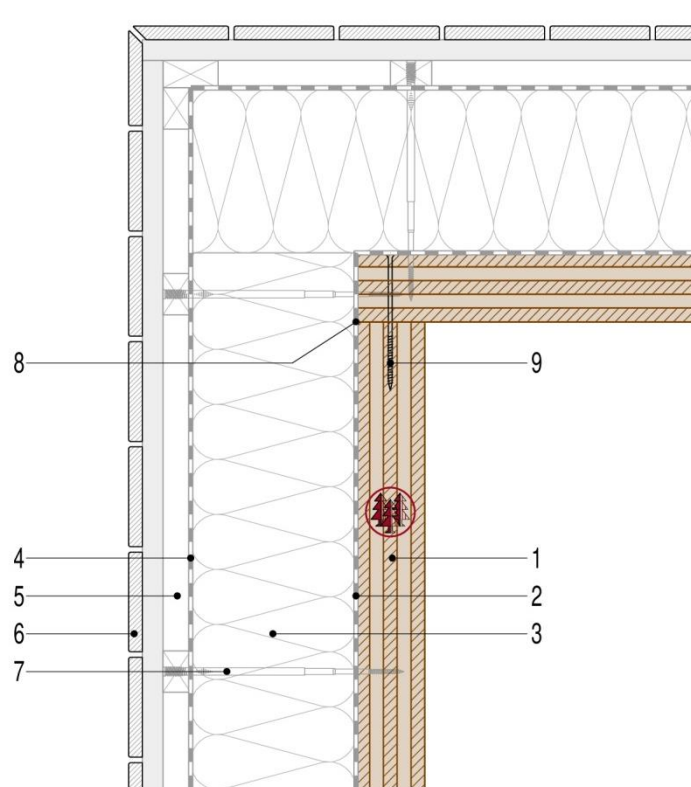


## 2.1 Detail of exterior wall corner-connection

### Variant 1

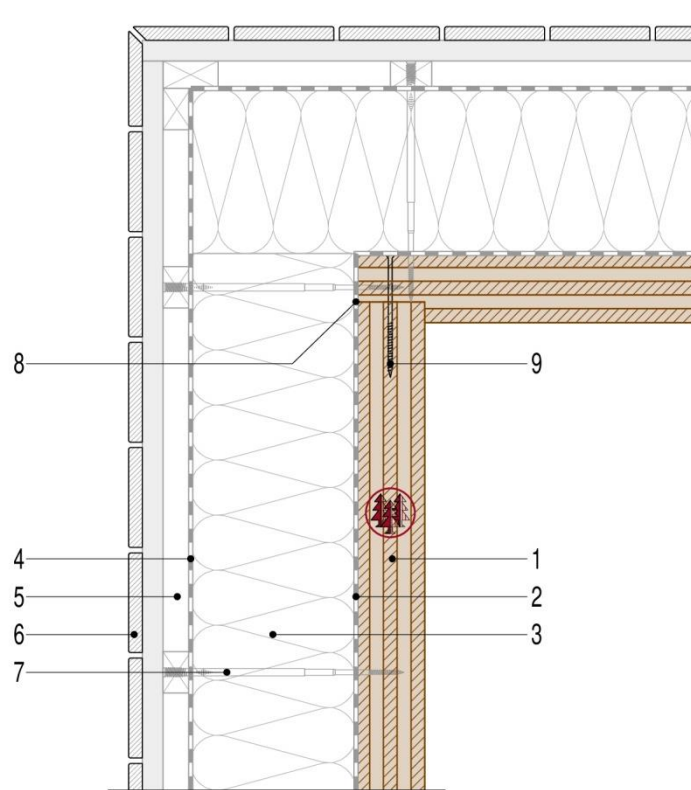


- |   |  |
|---|--|
| 1 CLT panel (according to statics)                              | 6 Exterior timber cladding(see profile on <a href="http://www.schilliger.ch">www.schilliger.ch</a> ) |
| 2 Vapour barrier (if applicable, depending on building physics) | 7 Assembly (according to technical data sheets)  |
| 3 Insulation  | 8 Windproofing layer connection  |
| 4 Water barrier film  | 9 Assembly screws  |
| 5 Air gap, battens  |  |

This detail can be applied to single-storey or multi-storey wooden buildings. It serves as an aid and does not replace a building concept. The detail must be adapted according on static, building physics and fire safety requirements. Variants with different products are possible. Our technical office is at your disposal for any questions you may have.

## 2.1 Detail of exterior wall corner-connection

### Variant 2



- |   |  |
|---|--|
| 1 CLT panel (according to statics)                              | 6 Exterior timber cladding(see profile on <a href="http://www.schilliger.ch">www.schilliger.ch</a> ) |
| 2 Vapour barrier (if applicable, depending on building physics) | 7 Assembly (according to technical data sheets)  |
| 3 Insulation  | 8 Windproofing layer connection  |
| 4 Water barrier film  | 9 Assembly screws  |
| 5 Air gap, battens  |  |

This detail can be applied to single-storey or multi-storey wooden buildings. It serves as an aid and does not replace a building concept. The detail must be adapted according on static, building physics and fire safety requirements. Variants with different products are possible. Our technical office is at your disposal for any questions you may have.