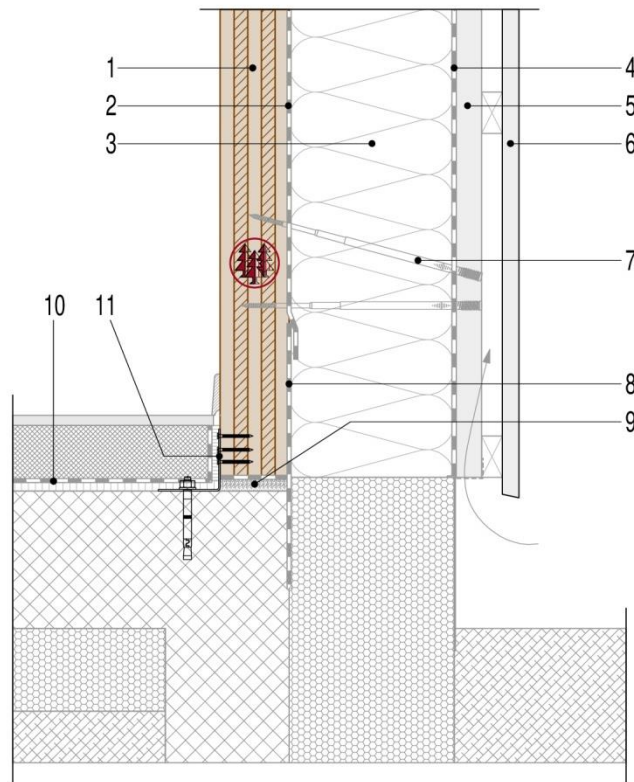


## 1.1 Detail of external wall anchoring

### Variant 1



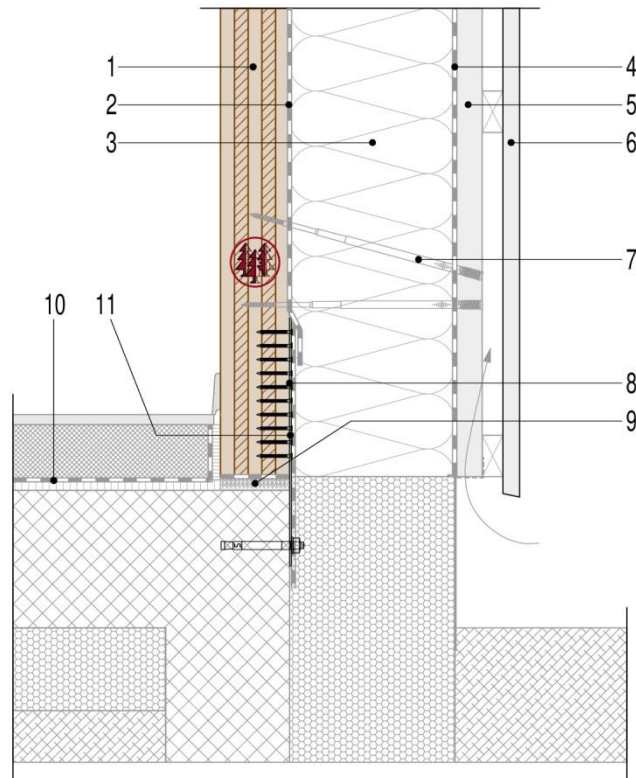
- |   |  |
|---|--|
| 1 CLT panel (according to statics)  | 7 Assembly (according to technical data sheets)                |
| 2 Vapour barrier (if applicable, depending on building physics)                                       | 8 Waterproofing/sealing  |
| 3 Insulation  | 9 Barrier layer and mortar bed                                 |
| 4 Water barrier film  | 10 Flooring  |
| 5 Air gap, battens  | 11 Angle-bracket and concrete anchoring (according to statics) |
| 6 Exterior timber cladding (see profile on <a href="http://www.schilliger.ch">www.schilliger.ch</a> ) |  |

This detail can be applied to single-storey or multi-storey wooden buildings. It serves as an aid and does not replace a building concept. The detail must be adapted according to static, building physics and fire safety requirements. Variants with different products are possible. Our technical office is at your disposal for any questions you may have.

### 1.2

## 1.1 Detail of external wall anchoring

### Variant 2

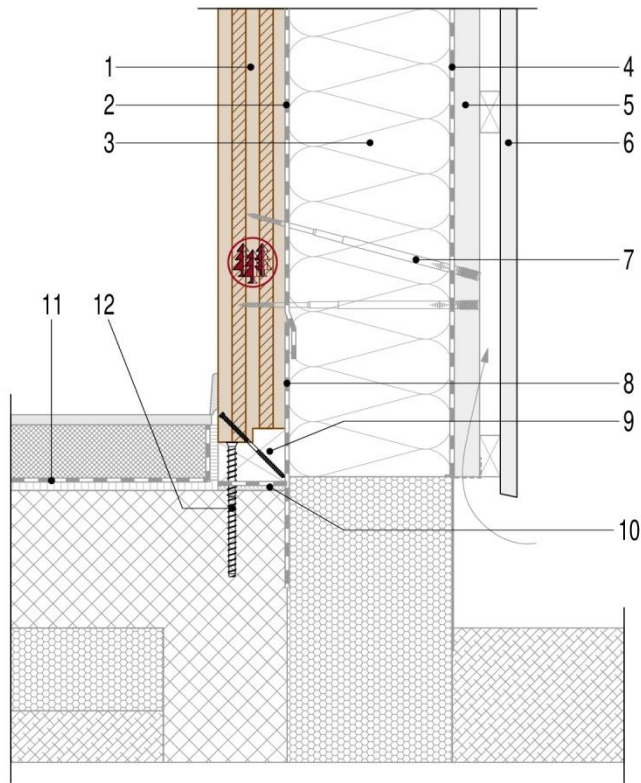


- |   |   |
|---|---|
| 1 CLT panel (according to statics)  | 7 Assembly (according to technical data sheets) |
| 2 Vapour barrier (if applicable, depending on building physics)                                       | 8 Waterproofing/sealing                         |
| 3 Insulation  | 9 Barrier layer and mortar bed                  |
| 4 Water barrier film  | 10 Flooring                                     |
| 5 Air gap, battens  | 11 Perforated sheet and concrete anchoring      |
| 6 Exterior timber cladding (see profile on <a href="http://www.schilliger.ch">www.schilliger.ch</a> ) | (according to statics)                          |

This detail can be applied to single-storey or multi-storey wooden buildings. It serves as an aid and does not replace a building concept. The detail must be adapted according to static, building physics and fire safety requirements. Variants with different products are possible. Our technical office is at your disposal for any questions you may have.

## 1.1 Detail of external wall anchoring

### Variant 3



- |   |   |
|---|---|
| 1 CLT panel (according to statics)  | 7 Assembly (according to technical data sheets) |
| 2 Vapour barrier (if applicable, depending on building physics)                                       | 8 Waterproofing/sealing                         |
| 3 Insulation  | 9 Wooden sleeper with rebate                    |
| 4 Water barrier film  | 10 Barrier layer and mortar bed                 |
| 5 Air gap, battens  | 11 Flooring                                     |
| 6 Exterior timber cladding (see profile on <a href="http://www.schilliger.ch">www.schilliger.ch</a> ) | 12 Concrete anchoring (according to statics)    |

This detail can be applied to single-storey or multi-storey wooden buildings. It serves as an aid and does not replace a building concept. The detail must be adapted according to static, building physics and fire safety requirements. Variants with different products are possible. Our technical office is at your disposal for any questions you may have.